

frozen palm trees
collective *presents*

three of hearts



@

Community table

Ct

On view: June 23rd through August 17th

Opening reception: June 26th, 4-6pm

The Three of Hearts exhibition references issues related to the environment, community and human connectedness—central themes for the collective Frozen Palm Trees. The collective is an initiative of three artists: Bia Monteiro, Mathew Papa and Veronica Puche. Hailing from diverse backgrounds, these artists reveal affinities and contrasts within their work that allow viewers to imagine and discover their own narratives.

Bia Monteiro



from *Waurá* series, 2015
size: 26 x 39 inches
edition: 5 + 2AP



from *Waurá* series, 2015
size: 26 x 33 inches
edition: 5 + 2AP



from series *love is fulfill*,
2012
size: 16 x 20 inches
edition: 5 + 2AP



tropics, 2015
size: 10 x 8 inches
edition: 3 + 1AP



Despedida, 2014
size: 16 x 20 inches
edition: 5 + 2AP



Narciso, 2015
size: 11 x 14 inches
edition: 5 + 2AP



from the series
bite the bullet, 2016
size: 16 x 23 inches
edition: 5 + 2AP



from the series
bite the bullet, 2016
size: 16 x 23 inches
edition: 5 + 2AP

Matthew Papa



Owen House ca. 1990, 2015
size: 14 x 21 inches
edition: 6 + 2AP



Toby, English Countryside
ca. 1987, 2015
size: 14 x 21 inches
edition: 6 + 2AP



Aphrodite in the Grove, 2015
size: 24 x 30 inches
edition: 6 + 2AP

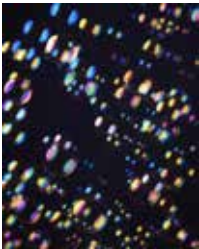
Matthew Papa (continued)



Untitled, 2015
size: 30 x 24 inches
edition: 6 + 2AP



Untitled, 2016
size: 36 x 24 inches
edition: 6 + 2AP



Untitled, 2015
size: 25 x 20 inches
edition: 6 + 2AP



Untitled, 2015
size: 16 x 20 inches
edition: 6 + 2AP



CPEP ca. 1983, 2015
size: 21 x 14 inches
edition: 6 + 2AP

Verónica Puche



Untitled, 2016
size: 20 x 30 inches
edition: 7 + 2AP



Rojo, 2016
size: 20 x 30 inches
edition: 7 + 2AP



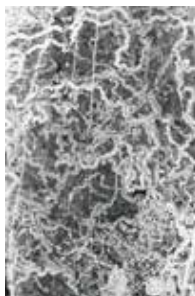
Sobre hojas, 2016
size: 14 x 21 inches
edition: 7 + 2AP



Piedras, 2015
size: 14 x 21 inches
edition: 7 + 2AP



Cartagena en Ruinas, 2014
size: 21 x 14 inches
edition: 7 + 2AP



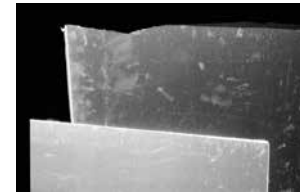
Rastros, 2014
size: 20 x 30 inches
edition: 9 + 2AP



Timiza, 2014
size: 14 x 21 inches
edition: 9 + 2AP



Frente al Mar, 2015
size: 20 x 30 inches
edition: 7 + 2AP



Paisaje Reflectivo, 2015
size: 20 x 30 inches
edition: 9 + 2AP

Bia Monteiro (b.1976, Rio de Janeiro, Brazil) is a visual artist working primarily with photography, video and installations. Her work references matters of safety and displacement within domestic spaces and national borders, as well as environmental concerns through the use of architecture and structural materials.

www.biamonteiro.com

Matthew Papa (b.1967, Detroit, MI) is a New York-based artist working primarily in photography. His undergraduate study of philosophy informs his artistic practice and he's interested in photography's ability to complicate meaning. Desire and the body are often subjects in his work because our ideas around them are rife with conflict.

www.matthewpapaphoto.com

Verónica Puche (b.1984, Bogotá, Colombia) is a visual artist with a background in industrial design. Puche explores new ways to interact with an image, bringing fragments of her memory and intimate internal dialogs to reality through her work while simultaneously addressing social and historical issues.

www.vpuche.com

If you are interested in purchasing one of the works in the exhibit, please contact:
Verónica Puche
frozenpalmtreesNYC@gmail.com
347-781-9862